



# NAVA GROVE

# All Within Minutes' Reach

## Next Stop, Everywhere

Dover MRT	4 min
Clementi MRT Interchange	4 min
King Albert Park MRT Interchange	7 min
Jurong East MRT Interchange	10 min
Maju MRT (U/C)	3 min

## Renowned Education Belts

Singapore University of Social Sciences (SUSS)	3 min
Pei Tong Primary School	4 min
Henry Park Primary School	4 min
Singapore Polytechnic	4 min
National University of Singapore (NUS)	4 min
Ngee Ann Polytechnic	7 min
Methodist Girls' School	7 min
United World College of South East Asia (UWCSEA)	7 min

## Embraced by Nature

Clementi Forest	2 min
Ulu Pandan Park Connector	4 min
Dover Forest	13 min
Rail Corridor	15 min

## Everyday Essentials, Elevated

One Holland Village	5 min
Clementi Mall	5 min
The Star Vista	6 min
Dempsey Hill	9 min
Jem	9 min
IMM Mall	9 min
Westgate	10 min
ION Orchard	12 min

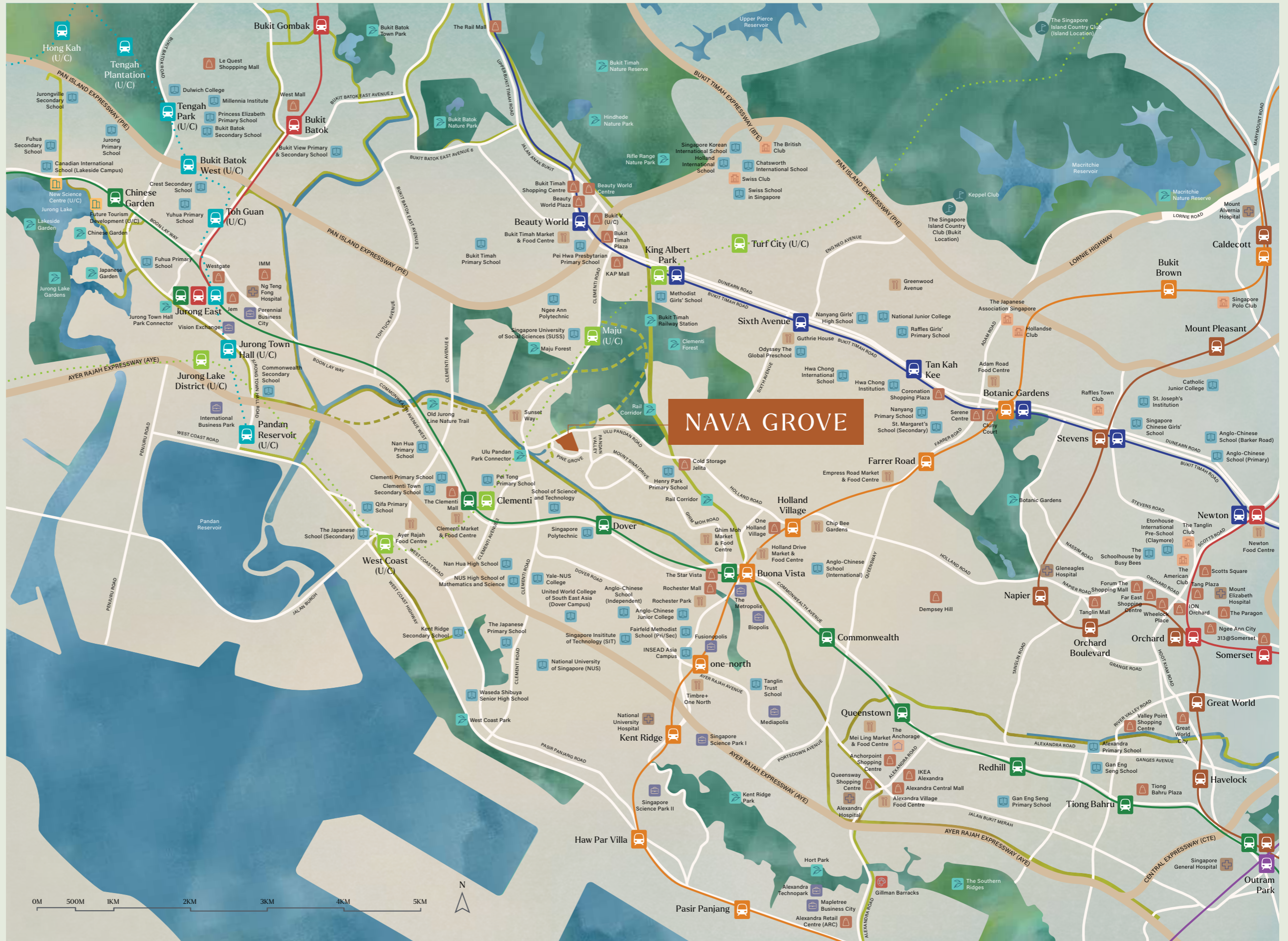
## Thriving Business Hubs

Singapore Science Park I & II	8 min
one-north Business Park	8 min
Jurong Lake District	12 min

Travel time is an estimate based on Google Maps and optimal conditions and should not be relied on as statements of facts. Every reasonable effort has been made in the preparation of the location map, which is printed as of October 2024. For information on permissible land use and the density of sites around the housing project, the intending purchaser may refer to the Master Plan available on the Urban Redevelopment Authority's website at [www.ura.gov.sg](http://www.ura.gov.sg).

## Legend

East-West Line	Cross Island Line (U/C)	Park Connector & Nature Way
North-South Line	North-East Line	Park Connector & Nature Way (Future)
Jurong Region Line (U/C)	Circle Line	
Downtown Line	Thomson-East Coast Line	



# At Home in Nature

Experience stunning, uninterrupted views of the surrounding beauty both within and beyond Nava Grove, all while feeling at home in nature. Selected units offer seamless vistas of Clementi Forest or the serene, meandering pools at the heart of the development.

## Arrival Zone

- 01 Arrival Plaza
- 02 Water Cascade
- 03 Rain Trees Courtyard
- 04 Drop-off Lounge
- 05 Resident's Lounge (Level 2)
- 06 Silver Garden

## Play Zone

- 07 Gymnasium
- 08 Exercise Deck
- 09 Changing Room & Steam Shower
- 10 Children's Playroom
- 11 Children's Pool
- 12 Lazy River
- 13 Splash Play
- 14 Children's Playground
- 15 Pet's Lawn
- 16 Multipurpose Court (Basement 1)
- 17 Tennis Court (Basement 1)

## Forest Zone

- 18 Forest Dining & Media Room (Level 2)
- 19 Swing Garden
- 20 Forest Walk
- 21 Swing Pod
- 22 Cocoon Pod
- 23 Fern Garden

## Entertainment Zone

- 24 Central Lawn
- 25 Lagoon Marquee
- 26 Social Lawn
- 27 BBQ Pavilion
- 28 Dining Cabana
- 29 Lagoon Pool
- 30 Jacuzzi Cove
- 31 Lagoon Pool Deck
- 32 Putting Green
- 33 Function Room
- 34 Social Terrace

## Wellness Zone

- 35 Look Out Walk
- 36 Look Out Pod
- 37 Bicycle Station (Basement 1)
- 38 Chill-out Pavilion
- 39 Reading Pavilion
- 40 Study Pavilion
- 41 Glamping Pavilion
- 42 BBQ Pavilion
- 43 Outdoor Fitness
- 44 Foliage Garden
- 45 Yoga Lawn
- 46 Infinity Edge Wellness Pool
- 47 Hydrotherapy Pockets
- 48 Jacuzzi Lounger
- 49 Jacuzzi Seats
- 50 Wading Pool
- 51 Wellness Pool Deck
- 52 Sunning Lawn

## Ancillary

- 53 Guardhouse
- 54 Management Office (Basement 1)
- 55 Pedestrian Gate (Side Gate)
- 56 Cyclist Access Gate (Side Gate)
- 57 Entrance to Basement Car Park
- 58 Bin Center (Basement 1)
- 59 Transformer & Switch Room (Basement 1)
- 60 Genset (Basement 1)
- 61 Bicycle Parking

- Water Tank
- Ventilation Shaft



The renderings of the units as shown are for illustrative purposes only. The shading and outline of the unit type only applies to typical units. The boundary lines of the units set out here are not to be taken as a factual representation of the actual units. Kindly refer to the approved BP plans for the actual unit outline/boundary lines.



# Unit Distribution

Type	Bedroom
B	2 Bedroom
BP	2 Bedroom Premium
BS	2 Bedroom + Study
C	3 Bedroom
CP	3 Bedroom Premium
D	4 Bedroom
DK	4 Bedroom Dual-Key
DP	4 Bedroom Premium + Private Lift
E	5 Bedroom Premium + Private Lift

Block 38

Unit/ Floor	1	2	3	4	5	6	7	8
24	B	CP-2	E	BS	BS	CP-3	C-2	B
23	B	CP-2	E	BS	BS	CP-3	C-2	B
22	B	CP-2	E	BS	BS	CP-3	C-2	B
21	B	CP-2	E	BS	BS	CP-3	C-2	B
20	B	CP-2	E	BS	BS	CP-3	C-2	B
19	B	CP-2	E	BS	BS	CP-3	C-2	B
18	B	CP-2	E	BS	BS	CP-3	C-2	B
17	B	CP-2	E	BS	BS	CP-3	C-2	B
16	B	CP-2	E	BS	BS	CP-3	C-2	B
15	B	CP-2	E	BS	BS	CP-3	C-2	B
14	B	CP-2	E	BS	BS	CP-3	C-2	B
13	B	CP-2	E	BS	BS	CP-3	C-2	B
12	B	CP-2	E	BS	BS	CP-3	C-2	B
11	B	CP-2	E	BS	BS	CP-3	C-2	B
10	B	CP-2	E	BS	BS	CP-3	C-2	B
9	B	CP-2	E	BS	BS	CP-3	C-2	B
8	B	CP-2	E	BS	BS	CP-3	C-2	B
7	B	CP-2	E	BS	BS	CP-3	C-2	B
6	B	CP-2	E	BS	BS	CP-3	C-2	B
5	B	CP-2	E	BS	BS	CP-3	C-2	B
4	B	CP-2	E	BS	BS	CP-3	C-2	B
3	B	CP-2	E	BS	BS	CP-3	C-2	B
2	B	CP-2	E	BS	BS	CP-3	C-2	B
1	Garden							
B	Basement Car Park							

Block 40

Unit/ Floor	9	10	11	12	13	14	15	16
24	BP-1	CP-4	D-1	BP-2	C-1	DK	D-2	BP-1
23	BP-1	CP-4	D-1	BP-2	C-1	DK	D-2	BP-1
22	BP-1	CP-4	D-1	BP-2	C-1	DK	D-2	BP-1
21	BP-1	CP-4	D-1	BP-2	C-1	DK	D-2	BP-1
20	BP-1	CP-4	D-1	BP-2	C-1	DK	D-2	BP-1
19	BP-1	CP-4	D-1	BP-2	C-1	DK	D-2	BP-1
18	BP-1	CP-4	D-1	BP-2	C-1	DK	D-2	BP-1
17	BP-1	CP-4	D-1	BP-2	C-1	DK	D-2	BP-1
16	BP-1	CP-4	D-1	BP-2	C-1	DK	D-2	BP-1
15	BP-1	CP-4	D-1	BP-2	C-1	DK	D-2	BP-1
14	BP-1	CP-4	D-1	BP-2	C-1	DK	D-2	BP-1
13	BP-1	CP-4	D-1	BP-2	C-1	DK	D-2	BP-1
12	BP-1	CP-4	D-1	BP-2	C-1	DK	D-2	BP-1
11	BP-1	CP-4	D-1	BP-2	C-1	DK	D-2	BP-1
10	BP-1	CP-4	D-1	BP-2	C-1	DK	D-2	BP-1
9	BP-1	CP-4	D-1	BP-2	C-1	DK	D-2	BP-1
8	BP-1	CP-4	D-1	BP-2	C-1	DK	D-2	BP-1
7	BP-1	CP-4	D-1	BP-2	C-1	DK	D-2	BP-1
6	BP-1	CP-4	D-1	BP-2	C-1	DK	D-2	BP-1
5	BP-1	CP-4	D-1	BP-2	C-1	DK	D-2	BP-1
4	BP-1	CP-4	D-1	BP-2	C-1	DK	D-2	BP-1
3	BP-1	CP-4	D-1	BP-2	C-1	DK	D-2	BP-1
2	BP-1	CP-4	D-1	BP-2	C-1	DK	D-2	BP-1
1	Garden							
B	Basement Car Park							

Block 42

Unit/ Floor	17	18	19	20	21	22	23	24
24	B	CP-1	DP-2	C-1	BP-2	DP-1	C-3	B
23	B	CP-1	DP-2	C-1	BP-2	DP-1	C-3	B
22	B	CP-1	DP-2	C-1	BP-2	DP-1	C-3	B
21	B	CP-1	DP-2	C-1	BP-2	DP-1	C-3	B
20	B	CP-1	DP-2	C-1	BP-2	DP-1	C-3	B
19	B	CP-1	DP-2	C-1	BP-2	DP-1	C-3	B
18	B	CP-1	DP-2	C-1	BP-2	DP-1	C-3	B
17	B	CP-1	DP-2	C-1	BP-2	DP-1	C-3	B
16	B	CP-1	DP-2	C-1	BP-2	DP-1	C-3	B
15	B	CP-1	DP-2	C-1	BP-2	DP-1	C-3	B
14	B	CP-1	DP-2	C-1	BP-2	DP-1	C-3	B
13	B	CP-1	DP-2	C-1	BP-2	DP-1	C-3	B
12	B	CP-1	DP-2	C-1	BP-2	DP-1	C-3	B
11	B	CP-1	DP-2	C-1	BP-2	DP-1	C-3	B
10	B	CP-1	DP-2	C-1	BP-2	DP-1	C-3	B
9	B	CP-1	DP-2	C-1	BP-2	DP-1	C-3	B
8	B	CP-1	DP-2	C-1	BP-2	DP-1	C-3	B
7	B	CP-1	DP-2	C-1	BP-2	DP-1	C-3	B
6	B	CP-1	DP-2	C-1	BP-2	DP-1	C-3	B
5	B	CP-1	DP-2	C-1	BP-2	DP-1	C-3	B
4	B	CP-1	DP-2	C-1	BP-2	DP-1	C-3	B
3	B	CP-1	DP-2	C-1	BP-2	DP-1	C-3	B
2	B	CP-1	DP-2	C-1	BP-2	DP-1	C-3	B
1	Garden							
B	Basement Car Park							

# 2 Bedroom

Type B

58 sqm / 624 sqft

BLK 38  
#02-01 to #24-01  
#02-08 to #24-08\*

BLK 42  
#02-17 to #24-17  
#02-24 to #24-24\*

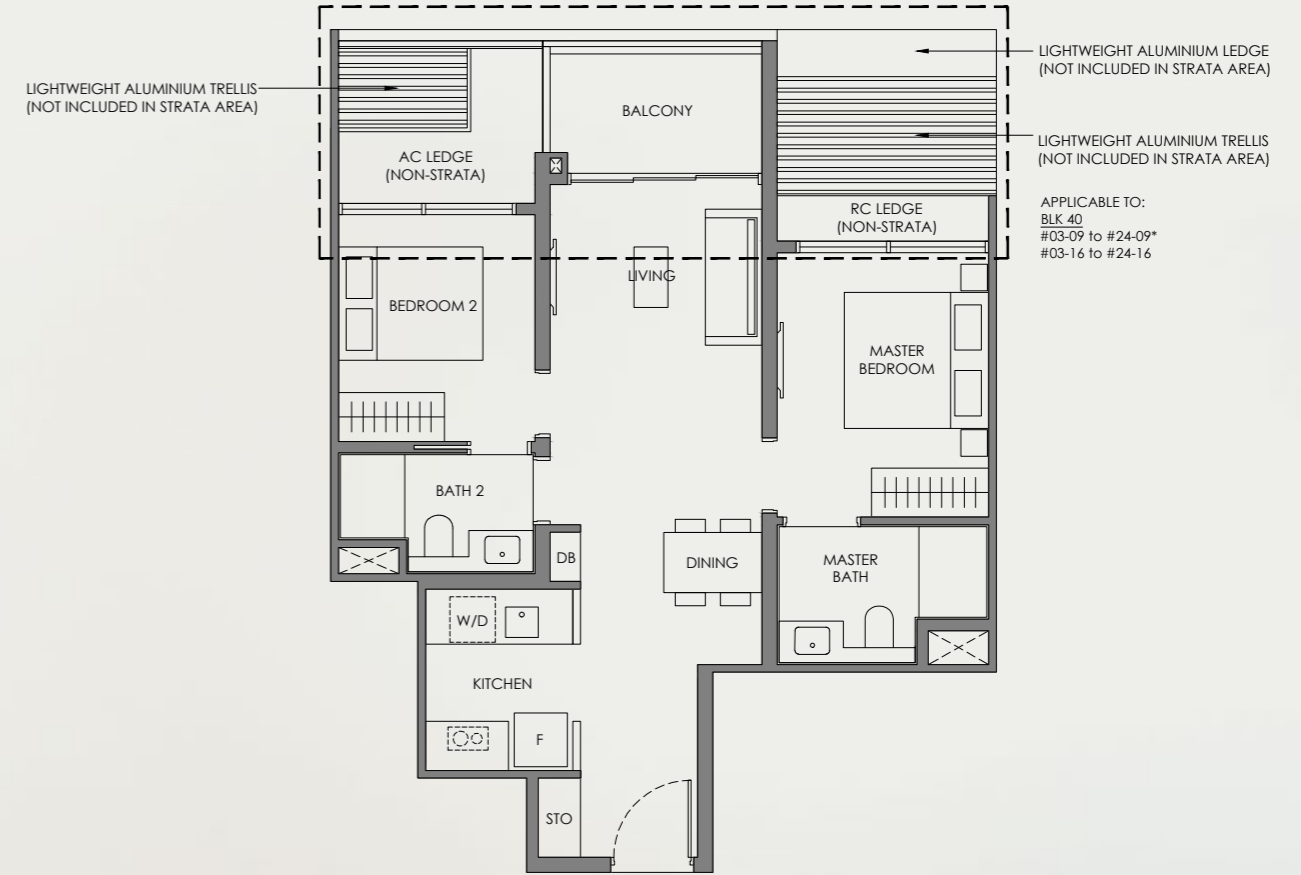
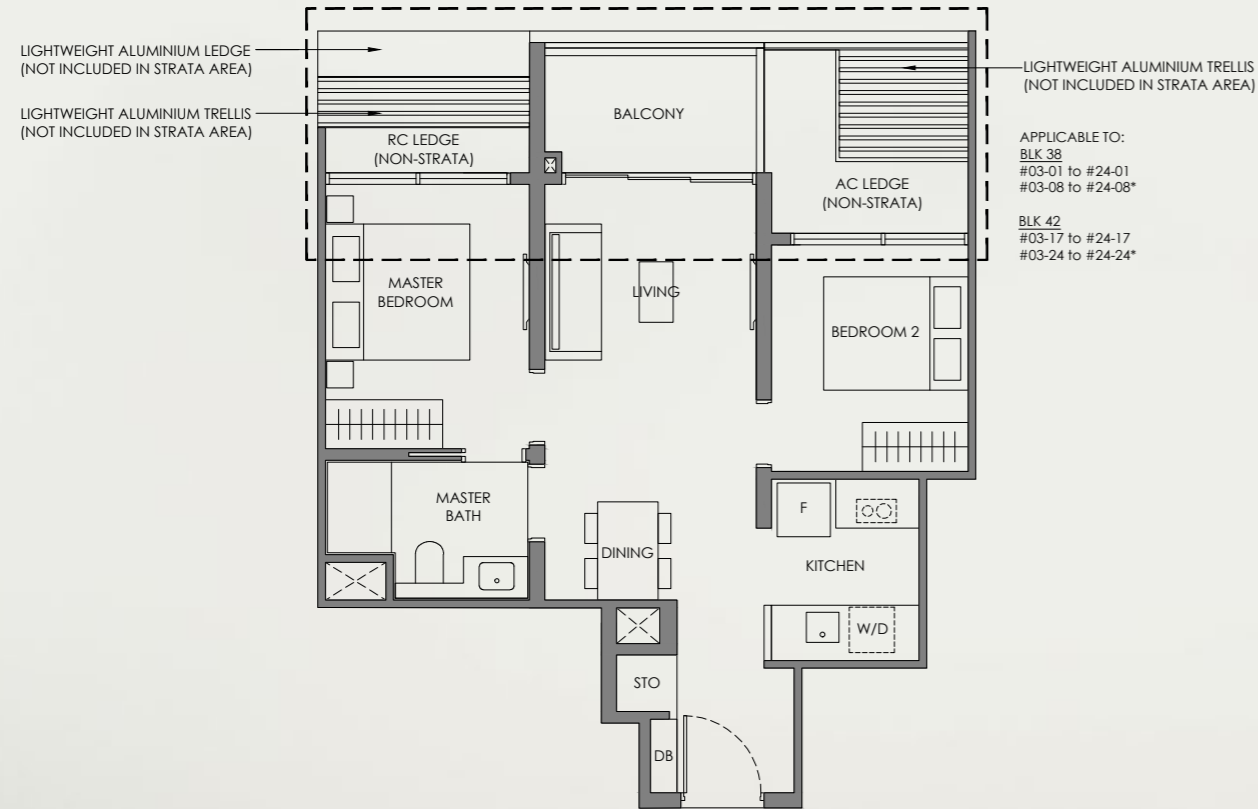


# 2 Bedroom Premium

Type BP-1

65 sqm / 700 sqft

BLK 40  
#02-09 to #24-09\*  
#02-16 to #24-16



Legend (Where Applicable):

- F - Fridge
- W/D - Washer cum Dryer
- DB - Distribution Board
- WC - Water Closet
- HS - Household Shelter
- PR - Powder Room
- WI - Wine Chiller
- STO - Store
- DM - Display Module
- WPD - Water Purifier & Dispenser
- DW - Dish Washer
- \*Mirror Image

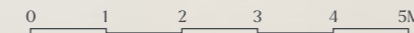
- Wall not allowed to be hacked or altered (including by way of drilling)
- Services void space (excluded from strata area)
- Rainwater downpipe shaft space (excluded from strata area)

DISCLAIMER: Area includes balcony where applicable, and excludes among others, the air-conditioner (AC) ledge and RC - Reinforced Concrete Ledge. Please refer to the key plan for orientation. All floor plans are approximate measurements only and are subject to government re-survey. The balcony shall not be enclosed unless with the approved balcony screen. The cost of screen and installation shall be borne by the Purchaser.

Scan For Facade Catalogue



Applicable to:  
BLK 38 BLK 42  
#02-01 #02-17  
#02-08\* #02-24\*



Legend (Where Applicable):

- F - Fridge
- W/D - Washer cum Dryer
- DB - Distribution Board
- WC - Water Closet
- HS - Household Shelter
- PR - Powder Room
- WI - Wine Chiller
- STO - Store
- DM - Display Module
- WPD - Water Purifier & Dispenser
- DW - Dish Washer
- \*Mirror Image

- Wall not allowed to be hacked or altered (including by way of drilling)
- Services void space (excluded from strata area)
- Rainwater downpipe shaft space (excluded from strata area)

DISCLAIMER: Area includes balcony where applicable, and excludes among others, the air-conditioner (AC) ledge and RC - Reinforced Concrete Ledge. Please refer to the key plan for orientation. All floor plans are approximate measurements only and are subject to government re-survey. The balcony shall not be enclosed unless with the approved balcony screen. The cost of screen and installation shall be borne by the Purchaser.

Scan For Facade Catalogue



Applicable to:  
BLK 40  
#02-09\*  
#02-16

# 2 Bedroom Premium

Type BP-2  
65 sqm / 700 sqft

BLK 40  
#02-12 to #24-12

BLK 42  
#02-21 to #24-21\*

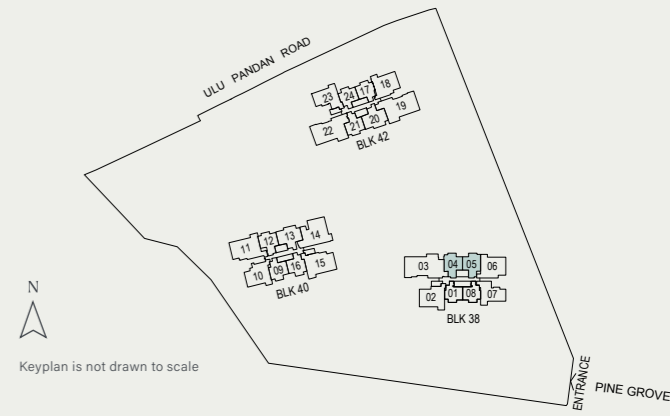


Keyplan is not drawn to scale

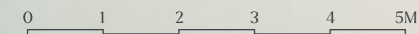
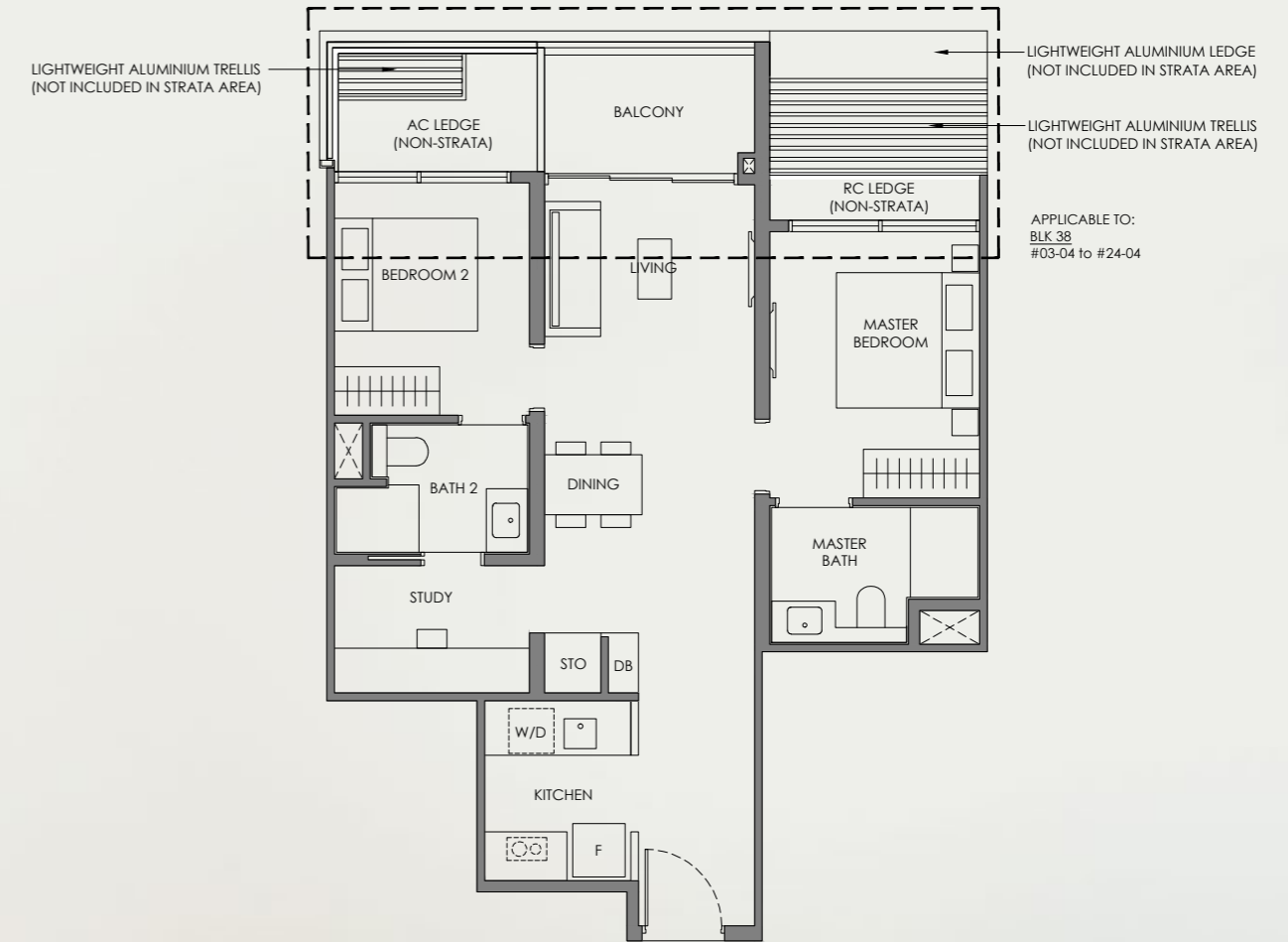
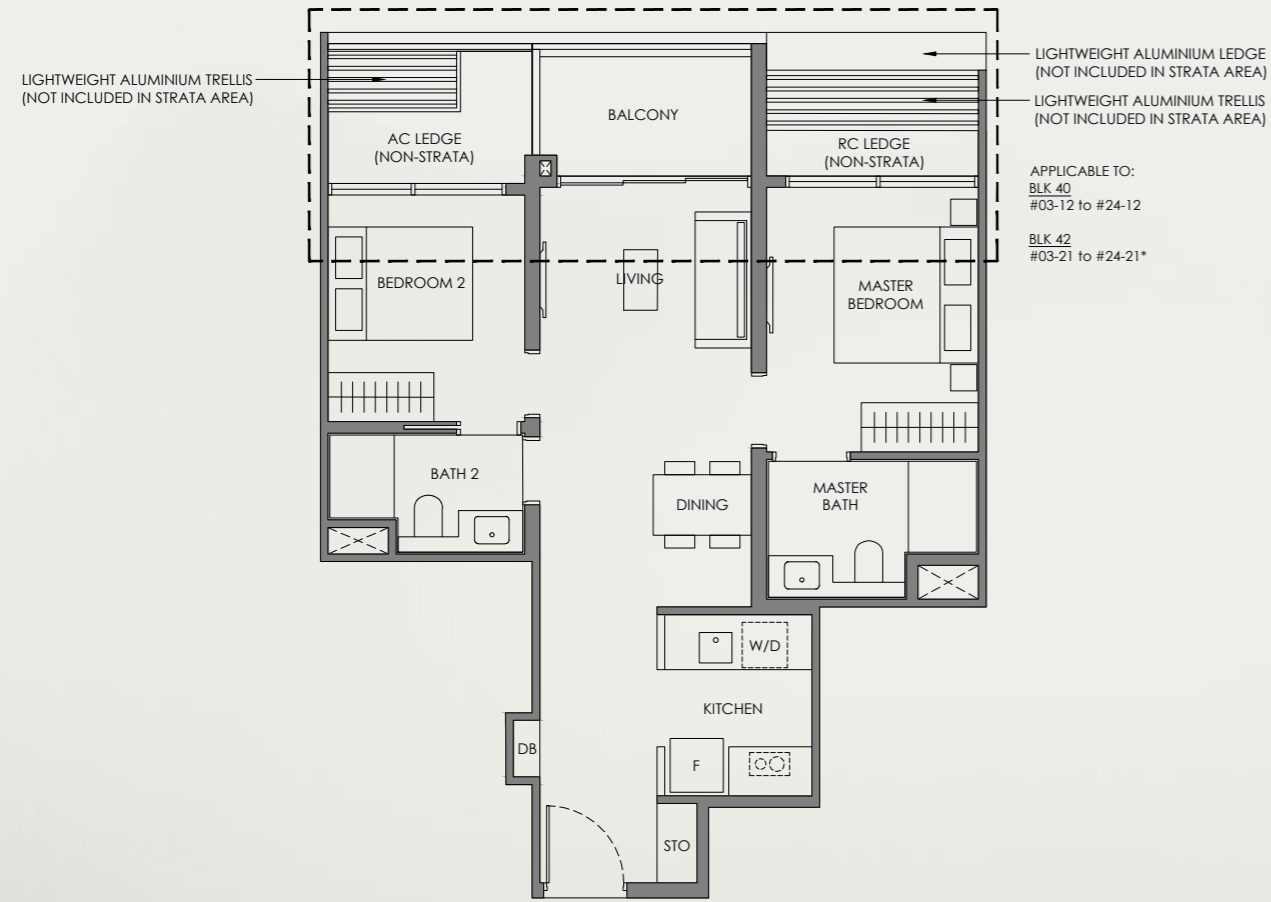
# 2 Bedroom + Study

Type BS  
73 sqm / 786 sqft

BLK 38  
#02-04 to #24-04  
#02-05 to #24-05\*



Keyplan is not drawn to scale



Legend (Where Applicable):

- F - Fridge
- W/D - Washer cum Dryer
- DB - Distribution Board
- WC - Water Closet
- HS - Household Shelter
- PR - Powder Room
- WI - Wine Chiller
- STO - Store
- DM - Display Module
- WPD - Water Purifier & Dispenser
- DW - Dish Washer
- \*Mirror Image

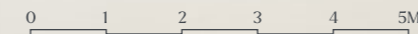
- Wall not allowed to be hacked or altered (including by way of drilling)
- Services void space (excluded from strata area)
- Rainwater downpipe shaft space (excluded from strata area)

DISCLAIMER: Area includes balcony where applicable, and excludes among others, the air-conditioner (AC) ledge and RC - Reinforced Concrete Ledge. Please refer to the key plan for orientation. All floor plans are approximate measurements only and are subject to government re-survey. The balcony shall not be enclosed unless with the approved balcony screen. The cost of screen and installation shall be borne by the Purchaser.

Scan For Facade Catalogue



Applicable to:  
BLK 40 BLK 42  
#02-12 #02-21\*



Legend (Where Applicable):

- F - Fridge
- W/D - Washer cum Dryer
- DB - Distribution Board
- WC - Water Closet
- HS - Household Shelter
- PR - Powder Room
- WI - Wine Chiller
- STO - Store
- DM - Display Module
- WPD - Water Purifier & Dispenser
- DW - Dish Washer
- \*Mirror Image

- Wall not allowed to be hacked or altered (including by way of drilling)
- Services void space (excluded from strata area)
- Rainwater downpipe shaft space (excluded from strata area)

DISCLAIMER: Area includes balcony where applicable, and excludes among others, the air-conditioner (AC) ledge and RC - Reinforced Concrete Ledge. Please refer to the key plan for orientation. All floor plans are approximate measurements only and are subject to government re-survey. The balcony shall not be enclosed unless with the approved balcony screen. The cost of screen and installation shall be borne by the Purchaser.

Scan For Facade Catalogue



Applicable to:  
BLK 38  
#02-04  
#02-05 to #24-05\*

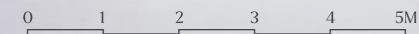
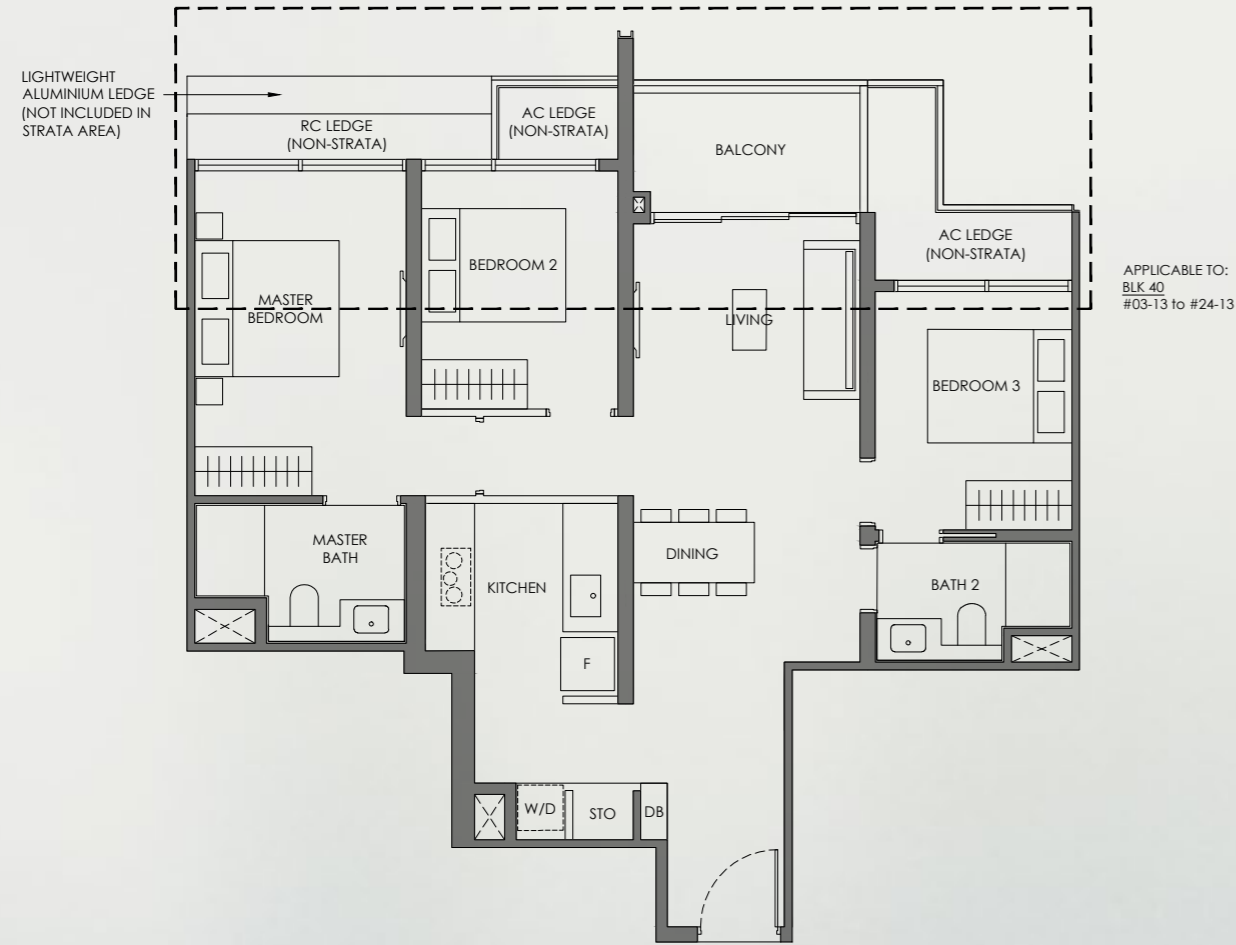
# 3 Bedroom

Type C-1

88 sqm / 947 sqft

BLK 40  
#02-13 to #24-13

BLK 42  
#02-20 to #24-20\*



Legend (Where Applicable):

- |                         |                                  |
|-------------------------|----------------------------------|
| F - Fridge              | WI - Wine Chiller                |
| W/D - Washer cum Dryer  | STO - Store                      |
| DB - Distribution Board | DM - Display Module              |
| WC - Water Closet       | WPD - Water Purifier & Dispenser |
| HS - Household Shelter  | DW - Dish Washer                 |
| PR - Powder Room        | *Mirror Image                    |

- Wall not allowed to be hacked or altered (including by way of drilling)
- Services void space (excluded from strata area)
- Rainwater downpipe shaft space (excluded from strata area)

DISCLAIMER: Area includes balcony where applicable, and excludes among others, the air-conditioner (AC) ledge and RC - Reinforced Concrete Ledge. Please refer to the key plan for orientation. All floor plans are approximate measurements only and are subject to government re-survey. The balcony shall not be enclosed unless with the approved balcony screen. The cost of screen and installation shall be borne by the Purchaser.

Scan For Facade Catalogue



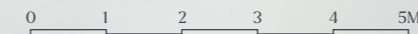
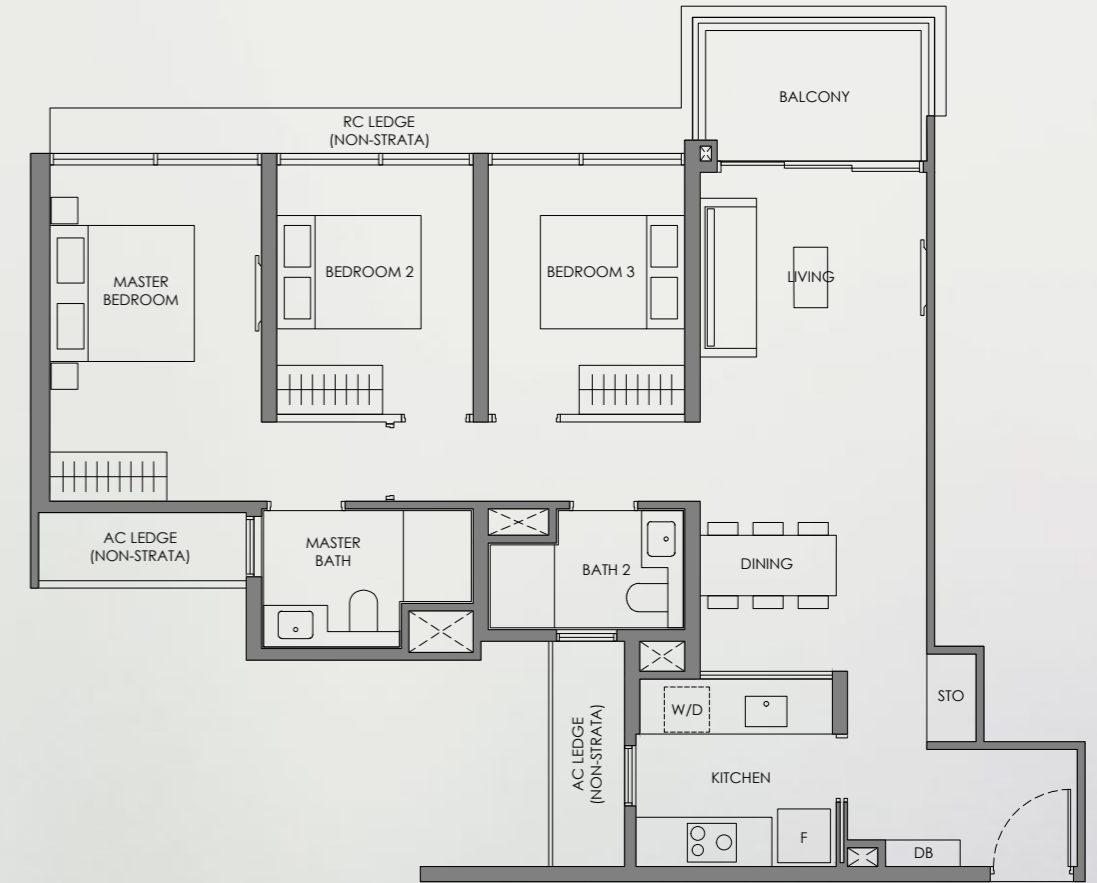
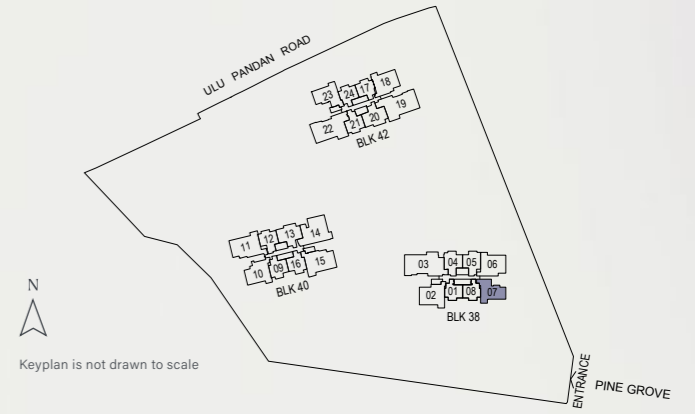
Applicable to:  
BLK 40 BLK 42  
#02-13 #02-20 to  
#24-20\*

# 3 Bedroom

Type C-2

92 sqm / 990 sqft

BLK 38  
#02-07 to #24-07



Legend (Where Applicable):

- |                         |                                  |
|-------------------------|----------------------------------|
| F - Fridge              | WI - Wine Chiller                |
| W/D - Washer cum Dryer  | STO - Store                      |
| DB - Distribution Board | DM - Display Module              |
| WC - Water Closet       | WPD - Water Purifier & Dispenser |
| HS - Household Shelter  | DW - Dish Washer                 |
| PR - Powder Room        | *Mirror Image                    |

- Wall not allowed to be hacked or altered (including by way of drilling)
- Services void space (excluded from strata area)
- Rainwater downpipe shaft space (excluded from strata area)

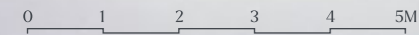
DISCLAIMER: Area includes balcony where applicable, and excludes among others, the air-conditioner (AC) ledge and RC - Reinforced Concrete Ledge. Please refer to the key plan for orientation. All floor plans are approximate measurements only and are subject to government re-survey. The balcony shall not be enclosed unless with the approved balcony screen. The cost of screen and installation shall be borne by the Purchaser.

# 3 Bedroom

Type C-3

92 sqm / 990 sqft

BLK 42  
#02-23 to #24-23



**Legend (Where Applicable):**

- F - Fridge
- W/D - Washer cum Dryer
- DB - Distribution Board
- WC - Water Closet
- HS - Household Shelter
- PR - Powder Room
- WI - Wine Chiller
- STO - Store
- DM - Display Module
- WPD - Water Purifier & Dispenser
- DW - Dish Washer
- \*Mirror Image

- Wall not allowed to be hacked or altered (including by way of drilling)
- Services void space (excluded from strata area)
- Rainwater downpipe shaft space (excluded from strata area)

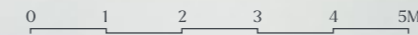
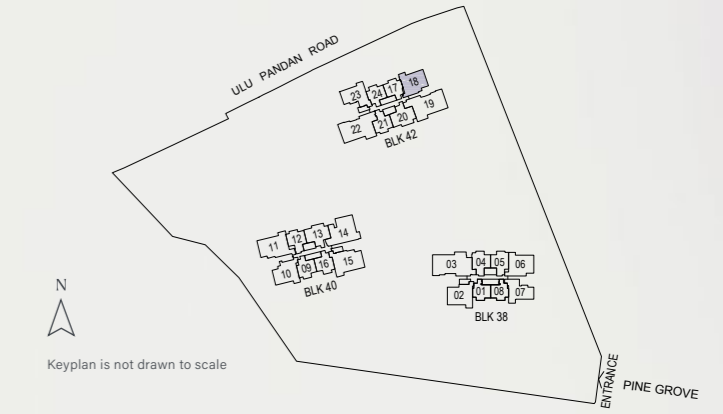
DISCLAIMER: Area includes balcony where applicable, and excludes among others, the air-conditioner (AC) ledge and RC - Reinforced Concrete Ledge. Please refer to the key plan for orientation. All floor plans are approximate measurements only and are subject to government re-survey. The balcony shall not be enclosed unless with the approved balcony screen. The cost of screen and installation shall be borne by the Purchaser.

# 3 Bedroom Premium

Type CP-1

102 sqm / 1098 sqft

BLK 42  
#02-18 to #24-18



**Legend (Where Applicable):**

- F - Fridge
- W/D - Washer cum Dryer
- DB - Distribution Board
- WC - Water Closet
- HS - Household Shelter
- PR - Powder Room
- WI - Wine Chiller
- STO - Store
- DM - Display Module
- WPD - Water Purifier & Dispenser
- DW - Dish Washer
- \*Mirror Image

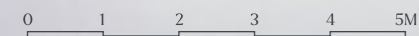
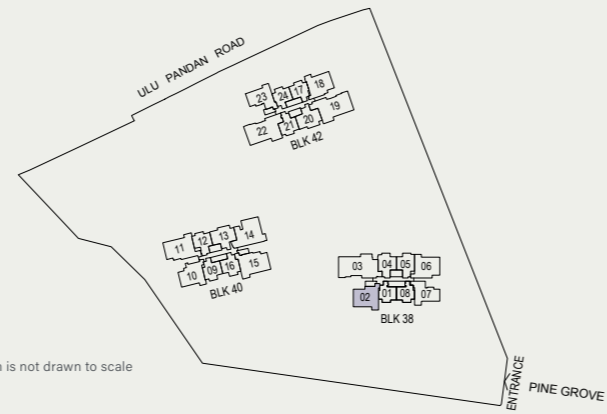
- Wall not allowed to be hacked or altered (including by way of drilling)
- Services void space (excluded from strata area)
- Rainwater downpipe shaft space (excluded from strata area)

DISCLAIMER: Area includes balcony where applicable, and excludes among others, the air-conditioner (AC) ledge and RC - Reinforced Concrete Ledge. Please refer to the key plan for orientation. All floor plans are approximate measurements only and are subject to government re-survey. The balcony shall not be enclosed unless with the approved balcony screen. The cost of screen and installation shall be borne by the Purchaser.

# 3 Bedroom Premium

Type CP-2  
103 sqm / 1109 sqft

BLK 38  
#02-02 to #24-02



- Legend (Where Applicable):**
- F - Fridge
  - W/D - Washer cum Dryer
  - DB - Distribution Board
  - WC - Water Closet
  - HS - Household Shelter
  - PR - Powder Room
  - WI - Wine Chiller
  - STO - Store
  - DM - Display Module
  - WPD - Water Purifier & Dispenser
  - DW - Dish Washer
  - \*Mirror Image

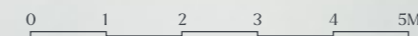
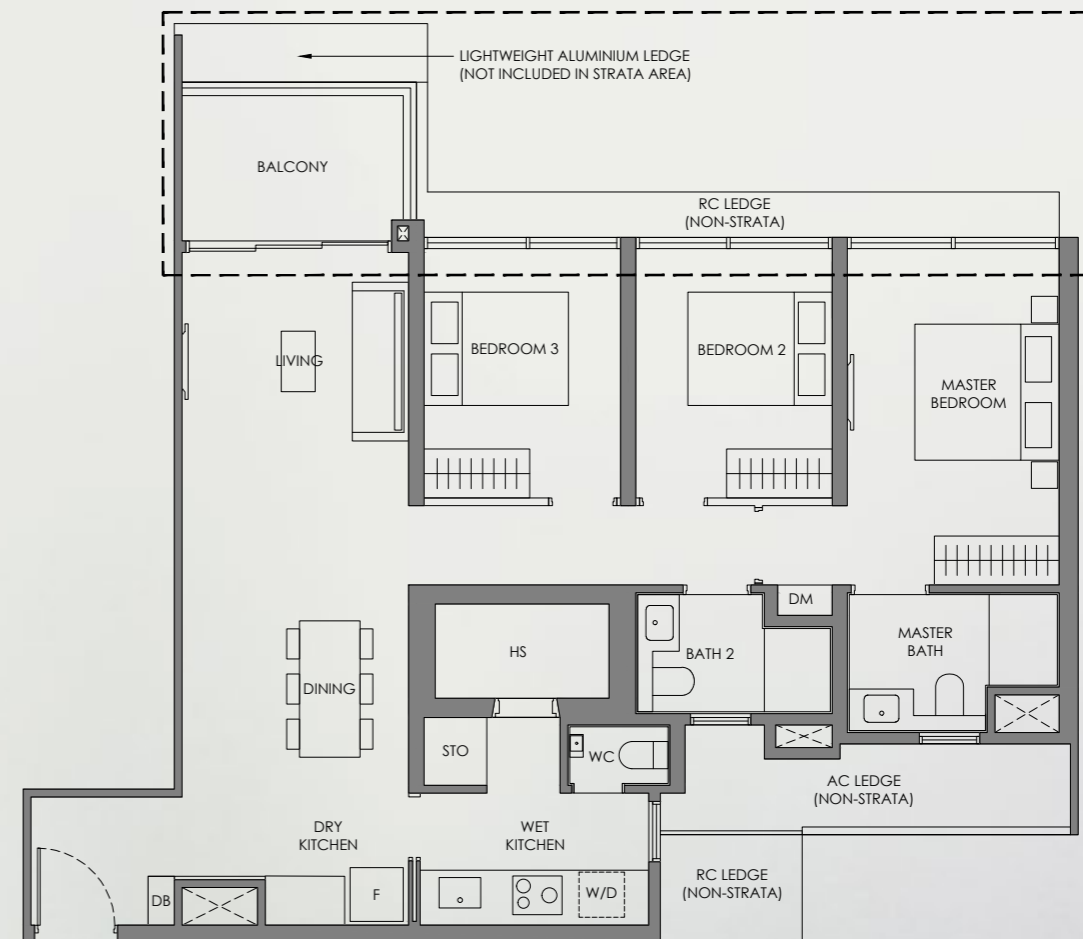
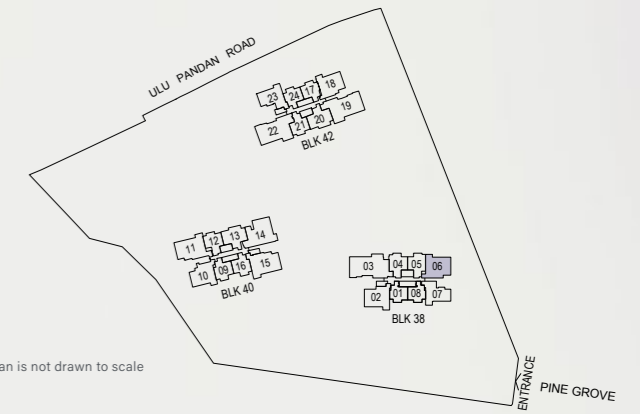
- Wall not allowed to be hacked or altered (including by way of drilling)
- Services void space (excluded from strata area)
- Rainwater downpipe shaft space (excluded from strata area)

DISCLAIMER: Area includes balcony where applicable, and excludes among others, the air-conditioner (AC) ledge and RC - Reinforced Concrete Ledge. Please refer to the key plan for orientation. All floor plans are approximate measurements only and are subject to government re-survey. The balcony shall not be enclosed unless with the approved balcony screen. The cost of screen and installation shall be borne by the Purchaser.

# 3 Bedroom Premium

Type CP-3  
103 sqm / 1109 sqft

BLK 38  
#02-06 to #24-06



- Legend (Where Applicable):**
- F - Fridge
  - W/D - Washer cum Dryer
  - DB - Distribution Board
  - WC - Water Closet
  - HS - Household Shelter
  - PR - Powder Room
  - WI - Wine Chiller
  - STO - Store
  - DM - Display Module
  - WPD - Water Purifier & Dispenser
  - DW - Dish Washer
  - \*Mirror Image

- Wall not allowed to be hacked or altered (including by way of drilling)
- Services void space (excluded from strata area)
- Rainwater downpipe shaft space (excluded from strata area)

DISCLAIMER: Area includes balcony where applicable, and excludes among others, the air-conditioner (AC) ledge and RC - Reinforced Concrete Ledge. Please refer to the key plan for orientation. All floor plans are approximate measurements only and are subject to government re-survey. The balcony shall not be enclosed unless with the approved balcony screen. The cost of screen and installation shall be borne by the Purchaser.

APPLICABLE TO:  
BLK 38  
#03-06 to #24-06

Scan For Facade Catalogue

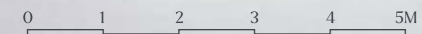


Applicable to:  
BLK 38  
#02-06

# 3 Bedroom Premium

Type CP-4  
103 sqm / 1109 sqft

BLK 40  
#02-10 to #24-10



**Legend (Where Applicable):**

- F - Fridge
- W/D - Washer cum Dryer
- DB - Distribution Board
- WC - Water Closet
- HS - Household Shelter
- PR - Powder Room
- WI - Wine Chiller
- STO - Store
- DM - Display Module
- WPD - Water Purifier & Dispenser
- DW - Dish Washer
- \*Mirror Image

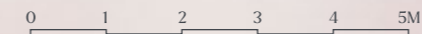
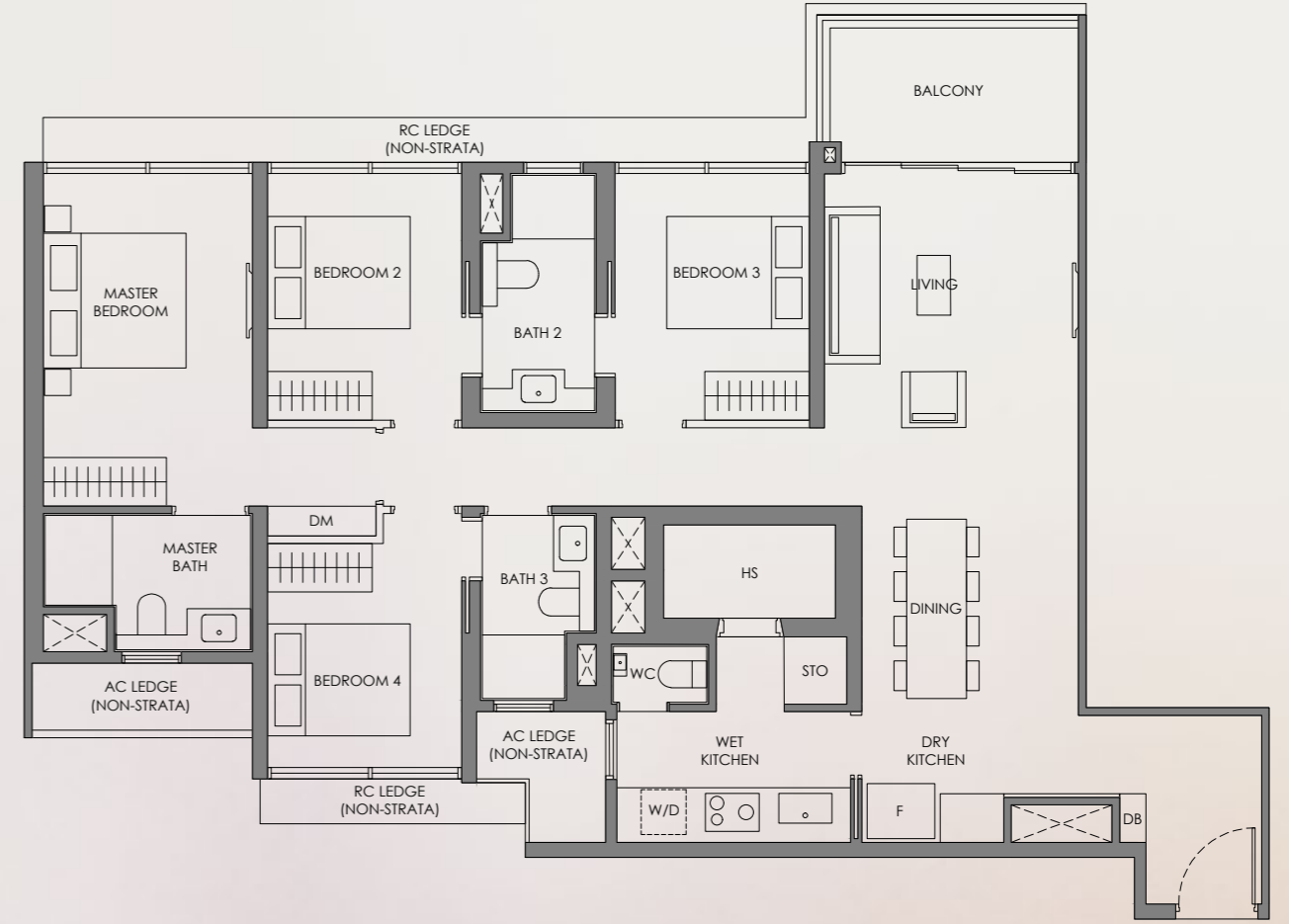
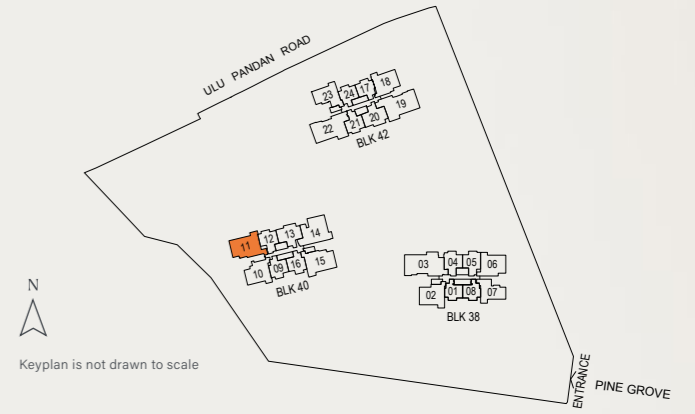
- Wall not allowed to be hacked or altered (including by way of drilling)
- Services void space (excluded from strata area)
- Rainwater downpipe shaft space (excluded from strata area)

DISCLAIMER: Area includes balcony where applicable, and excludes among others, the air-conditioner (AC) ledge and RC - Reinforced Concrete Ledge. Please refer to the key plan for orientation. All floor plans are approximate measurements only and are subject to government re-survey. The balcony shall not be enclosed unless with the approved balcony screen. The cost of screen and installation shall be borne by the Purchaser.

# 4 Bedroom

Type D-1  
124 sqm / 1335 sqft

BLK 40  
#02-11 to #24-11



**Legend (Where Applicable):**

- F - Fridge
- W/D - Washer cum Dryer
- DB - Distribution Board
- WC - Water Closet
- HS - Household Shelter
- PR - Powder Room
- WI - Wine Chiller
- STO - Store
- DM - Display Module
- WPD - Water Purifier & Dispenser
- DW - Dish Washer
- \*Mirror Image

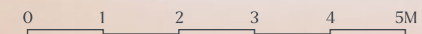
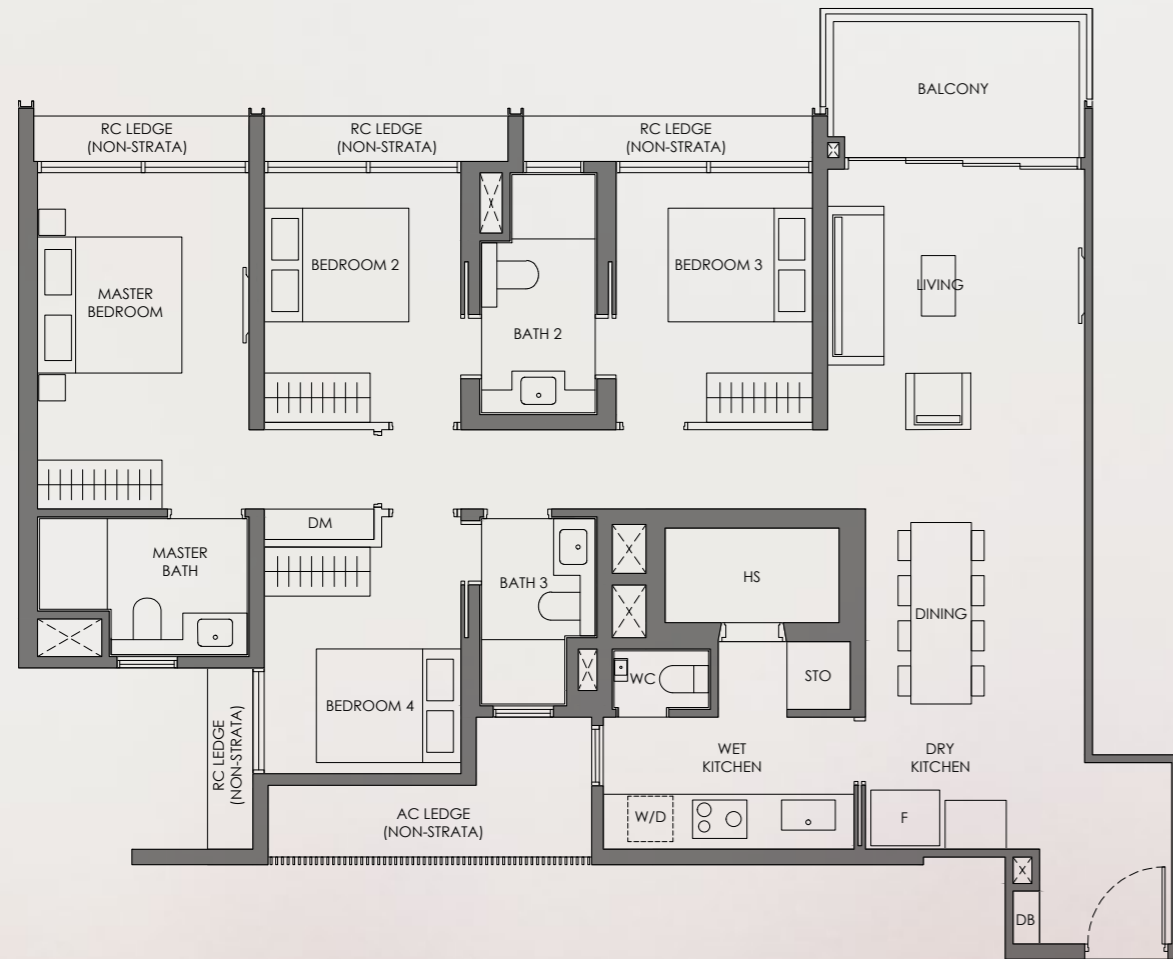
- Wall not allowed to be hacked or altered (including by way of drilling)
- Services void space (excluded from strata area)
- Rainwater downpipe shaft space (excluded from strata area)

DISCLAIMER: Area includes balcony where applicable, and excludes among others, the air-conditioner (AC) ledge and RC - Reinforced Concrete Ledge. Please refer to the key plan for orientation. All floor plans are approximate measurements only and are subject to government re-survey. The balcony shall not be enclosed unless with the approved balcony screen. The cost of screen and installation shall be borne by the Purchaser.

# 4 Bedroom

Type D-2  
124 sqm / 1335 sqft

BLK 40  
#02-15 to #24-15



**Legend (Where Applicable):**

- |                         |                                  |
|-------------------------|----------------------------------|
| F - Fridge              | WI - Wine Chiller                |
| W/D - Washer cum Dryer  | STO - Store                      |
| DB - Distribution Board | DM - Display Module              |
| WC - Water Closet       | WPD - Water Purifier & Dispenser |
| HS - Household Shelter  | DW - Dish Washer                 |
| PR - Powder Room        | *Mirror Image                    |

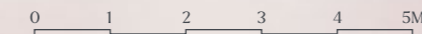
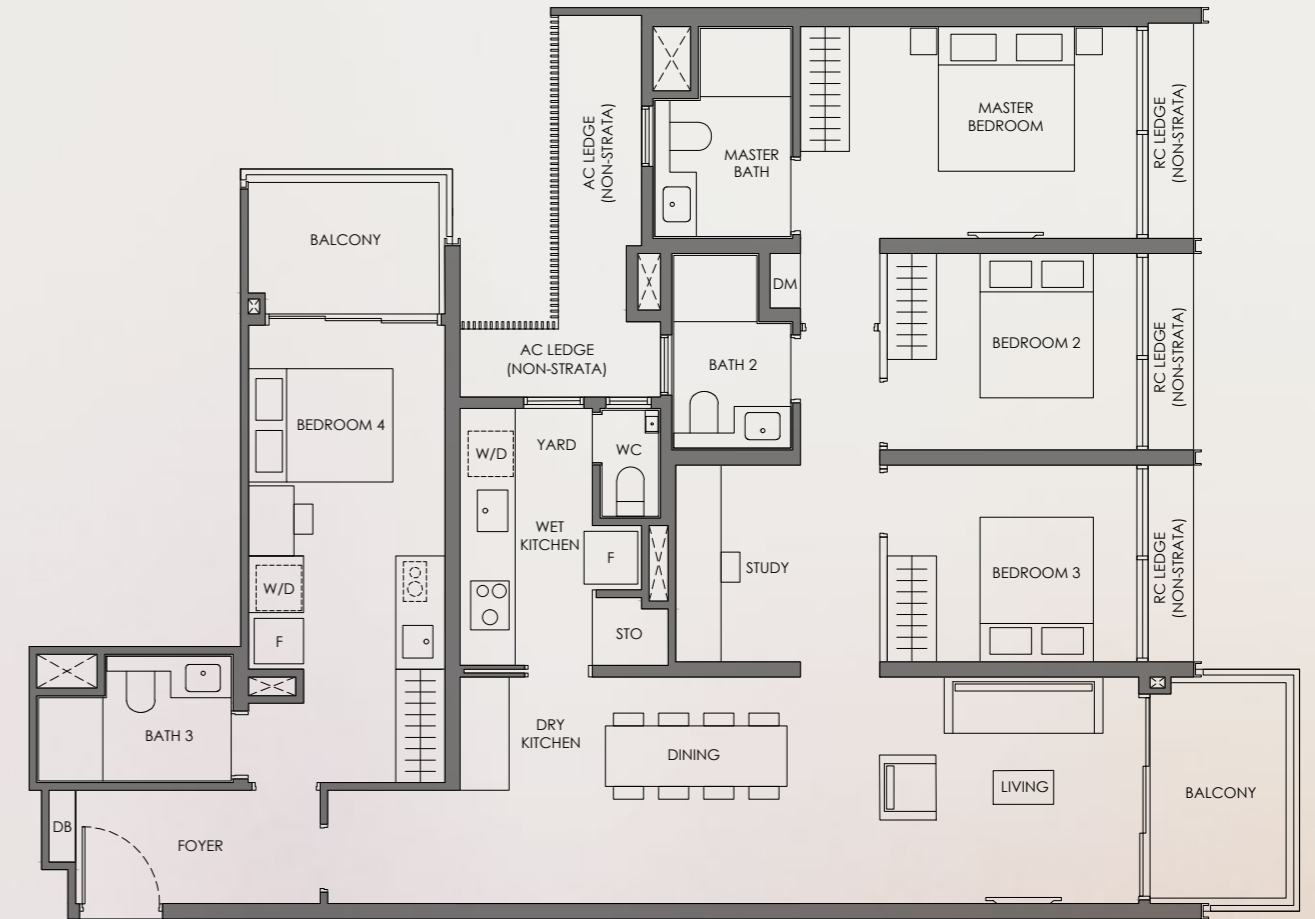
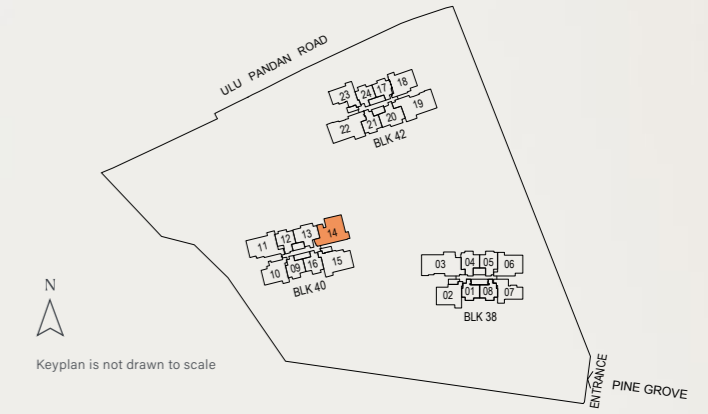
- Wall not allowed to be hacked or altered (including by way of drilling)
- Services void space (excluded from strata area)
- Rainwater downpipe shaft space (excluded from strata area)

DISCLAIMER: Area includes balcony where applicable, and excludes among others, the air-conditioner (AC) ledge and RC - Reinforced Concrete Ledge. Please refer to the key plan for orientation. All floor plans are approximate measurements only and are subject to government re-survey. The balcony shall not be enclosed unless with the approved balcony screen. The cost of screen and installation shall be borne by the Purchaser.

# 4 Bedroom Dual-Key

Type DK  
136 sqm / 1464 sqft

BLK 40  
#02-14 to #24-14



**Legend (Where Applicable):**

- |                         |                                  |
|-------------------------|----------------------------------|
| F - Fridge              | WI - Wine Chiller                |
| W/D - Washer cum Dryer  | STO - Store                      |
| DB - Distribution Board | DM - Display Module              |
| WC - Water Closet       | WPD - Water Purifier & Dispenser |
| HS - Household Shelter  | DW - Dish Washer                 |
| PR - Powder Room        | *Mirror Image                    |

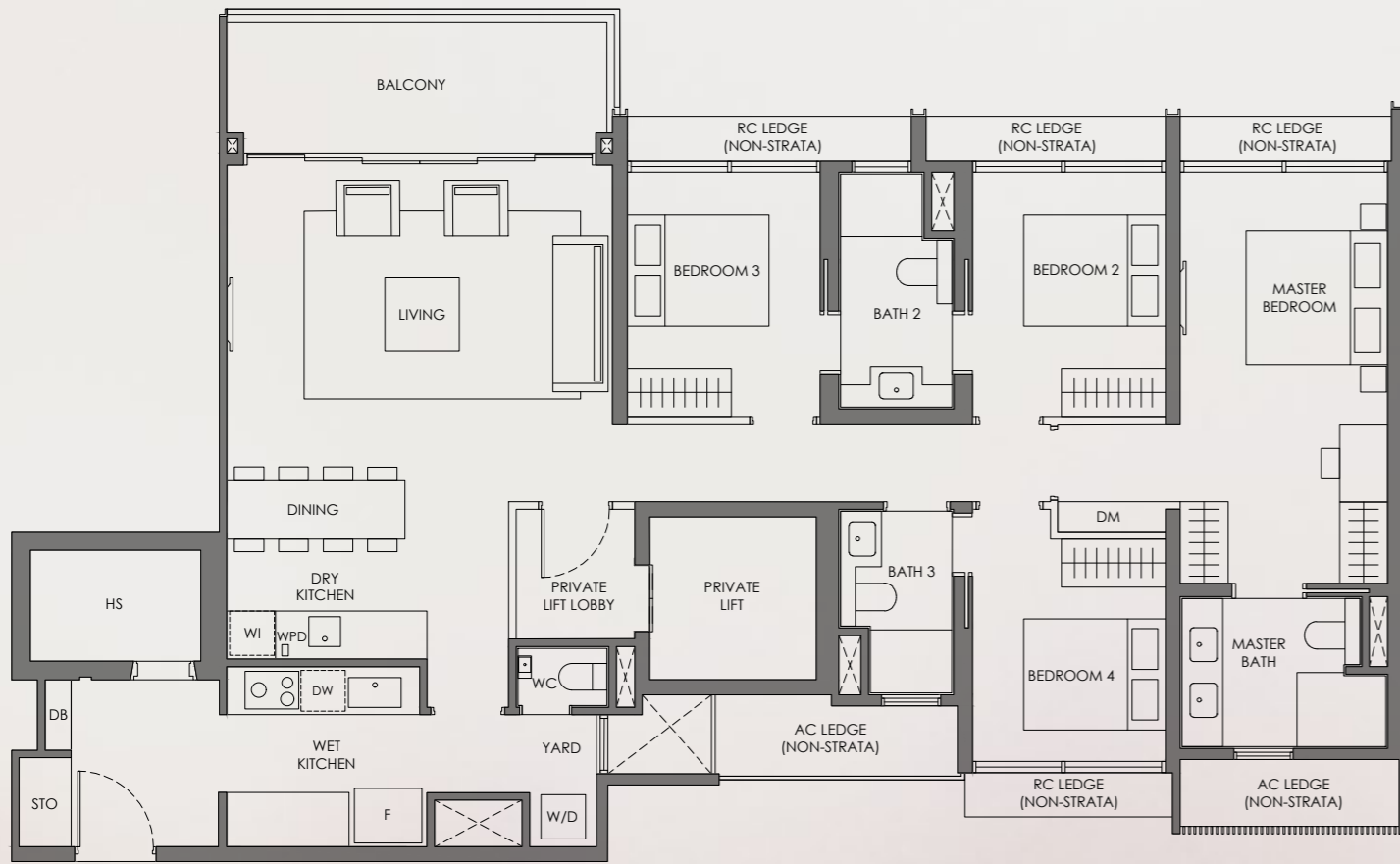
- Wall not allowed to be hacked or altered (including by way of drilling)
- Services void space (excluded from strata area)
- Rainwater downpipe shaft space (excluded from strata area)

DISCLAIMER: Area includes balcony where applicable, and excludes among others, the air-conditioner (AC) ledge and RC - Reinforced Concrete Ledge. Please refer to the key plan for orientation. All floor plans are approximate measurements only and are subject to government re-survey. The balcony shall not be enclosed unless with the approved balcony screen. The cost of screen and installation shall be borne by the Purchaser.

# 4 Bedroom Premium + Private Lift

Type DP-1  
144 sqm / 1550 sqft

BLK 42  
#02-22 to #24-22



**Legend (Where Applicable):**

- F - Fridge
- W/D - Washer cum Dryer
- DB - Distribution Board
- WC - Water Closet
- HS - Household Shelter
- PR - Powder Room
- WI - Wine Chiller
- STO - Store
- DM - Display Module
- WPD - Water Purifier & Dispenser
- DW - Dish Washer
- \*Mirror Image

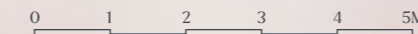
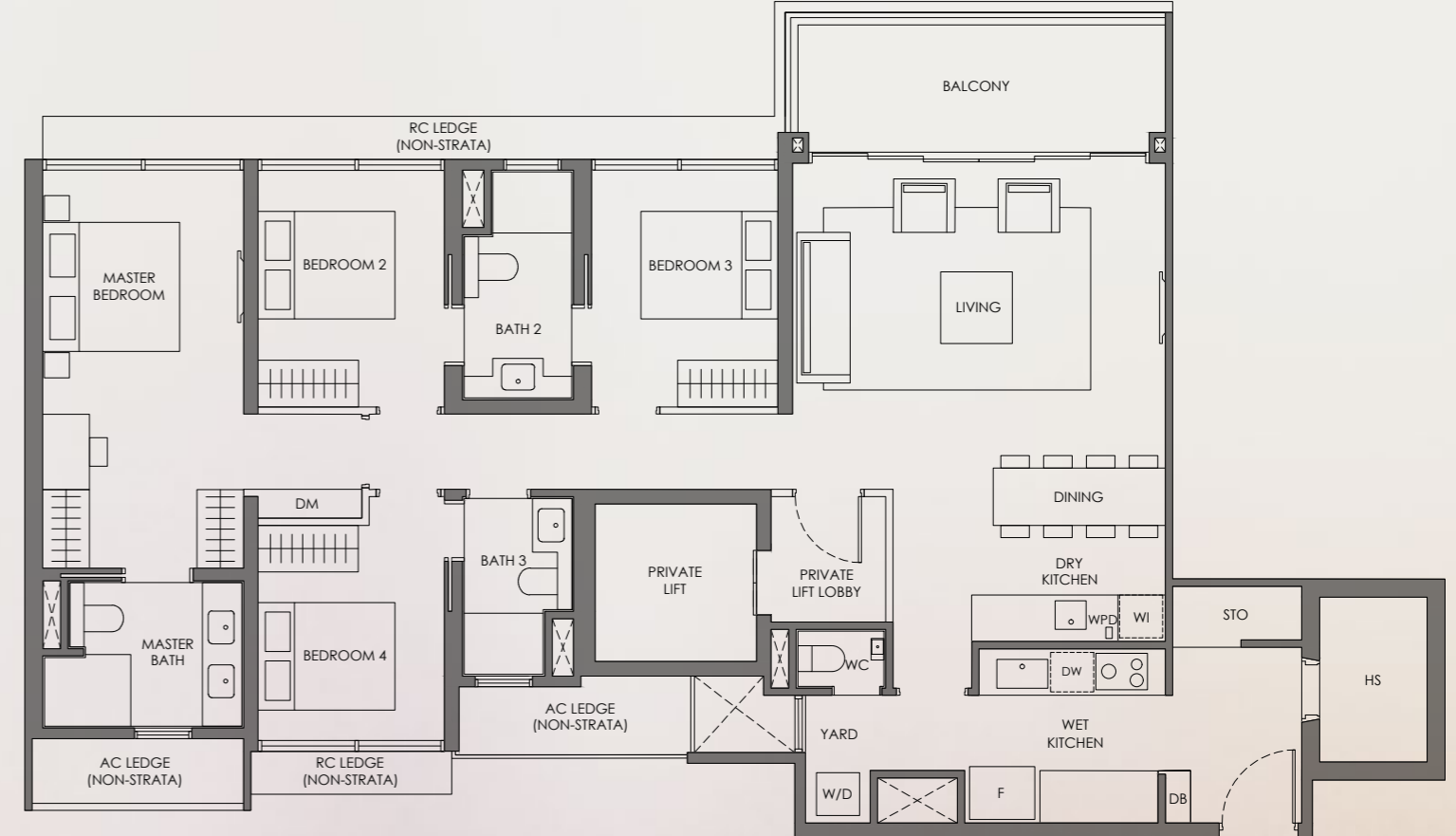
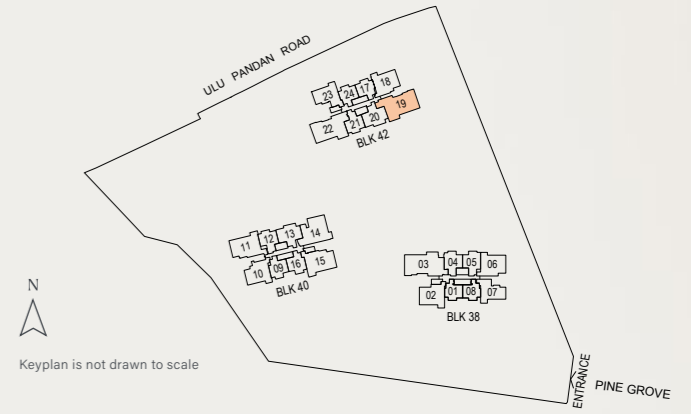
- Wall not allowed to be hacked or altered (including by way of drilling)
- Services void space (excluded from strata area)
- Rainwater downpipe shaft space (excluded from strata area)

DISCLAIMER: Area includes balcony where applicable, and excludes among others, the air-conditioner (AC) ledge and RC - Reinforced Concrete Ledge. Please refer to the key plan for orientation. All floor plans are approximate measurements only and are subject to government re-survey. The balcony shall not be enclosed unless with the approved balcony screen. The cost of screen and installation shall be borne by the Purchaser.

# 4 Bedroom Premium + Private Lift

Type DP-2  
144 sqm / 1550 sqft

BLK 42  
#02-19 to #24-19



**Legend (Where Applicable):**

- F - Fridge
- W/D - Washer cum Dryer
- DB - Distribution Board
- WC - Water Closet
- HS - Household Shelter
- PR - Powder Room
- WI - Wine Chiller
- STO - Store
- DM - Display Module
- WPD - Water Purifier & Dispenser
- DW - Dish Washer
- \*Mirror Image

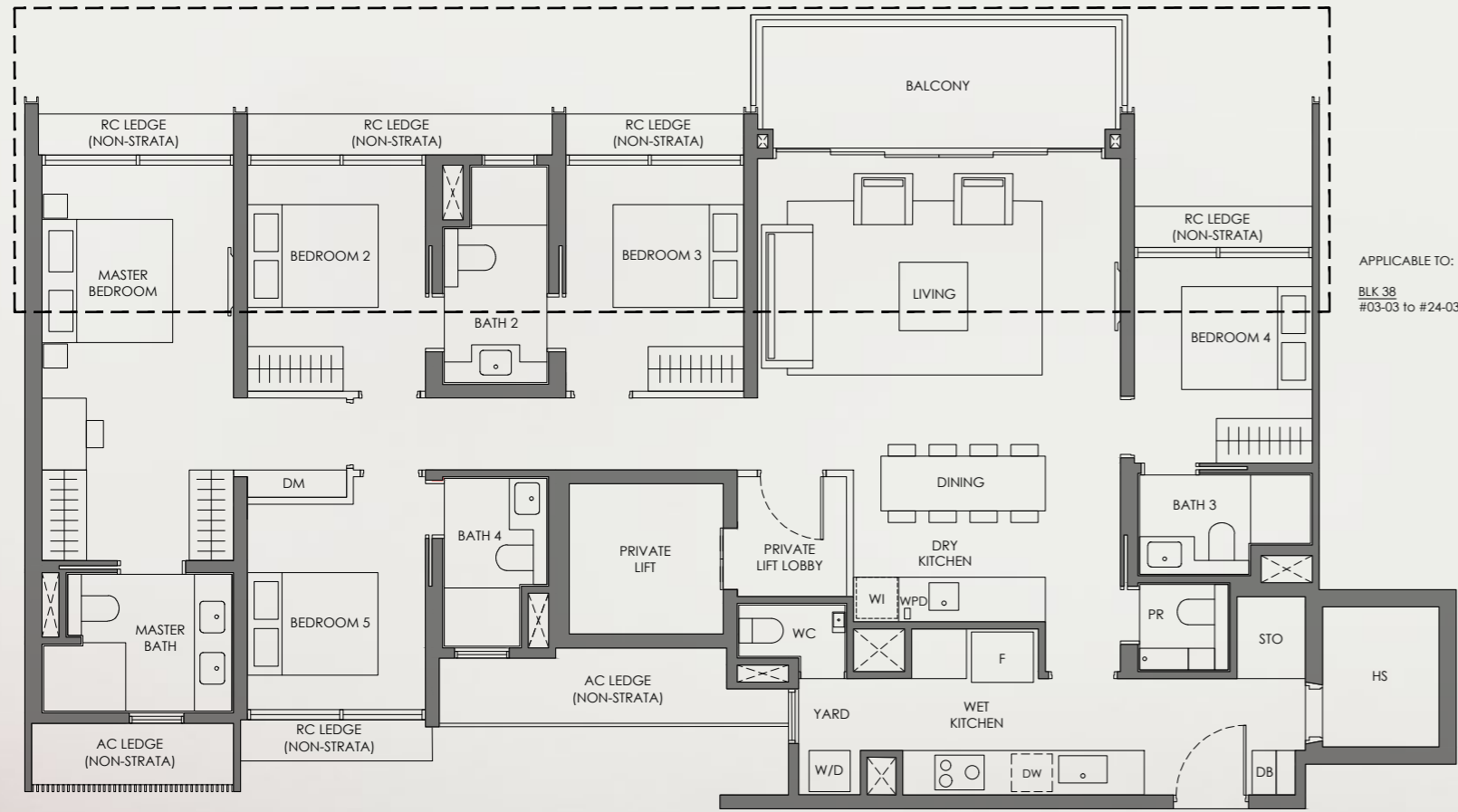
- Wall not allowed to be hacked or altered (including by way of drilling)
- Services void space (excluded from strata area)
- Rainwater downpipe shaft space (excluded from strata area)

DISCLAIMER: Area includes balcony where applicable, and excludes among others, the air-conditioner (AC) ledge and RC - Reinforced Concrete Ledge. Please refer to the key plan for orientation. All floor plans are approximate measurements only and are subject to government re-survey. The balcony shall not be enclosed unless with the approved balcony screen. The cost of screen and installation shall be borne by the Purchaser.

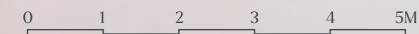
# 5 Bedroom Premium + Private Lift

Type E  
160 sqm / 1722 sqft

BLK 38  
#02-03 to #24-03



APPLICABLE TO:  
BLK 38  
#03-03 to #24-03



Legend (Where Applicable):

- F - Fridge
- W/D - Washer cum Dryer
- DB - Distribution Board
- WC - Water Closet
- HS - Household Shelter
- PR - Powder Room
- WI - Wine Chiller
- STO - Store
- DM - Display Module
- WPD - Water Purifier & Dispenser
- DW - Dish Washer
- \*Mirror Image

- Wall not allowed to be hacked or altered (including by way of drilling)
- Services void space (excluded from strata area)
- Rainwater downpipe shaft space (excluded from strata area)

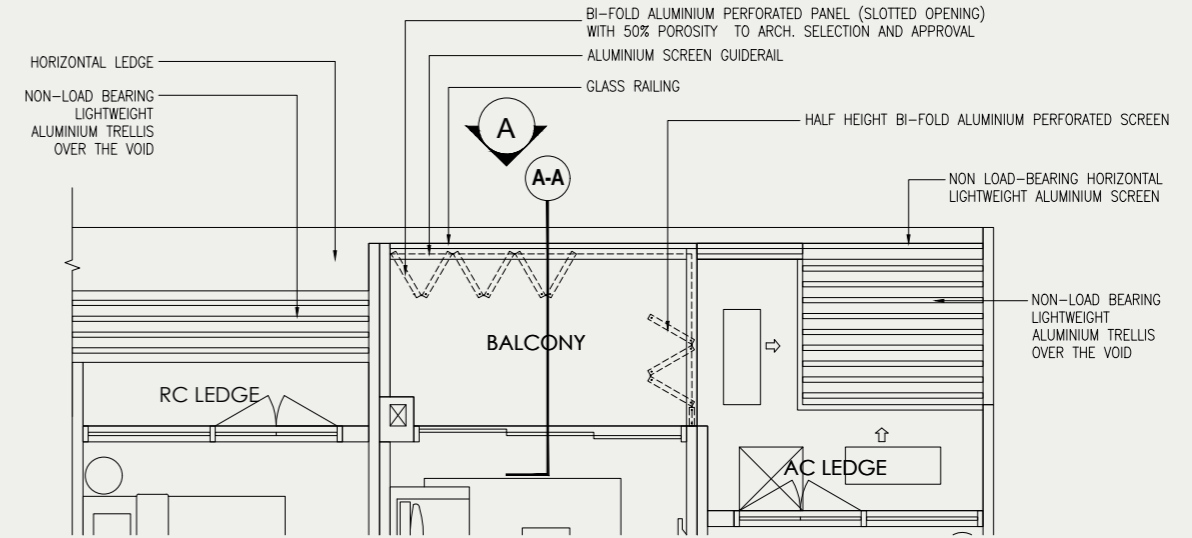
DISCLAIMER: Area includes balcony where applicable, and excludes among others, the air-conditioner (AC) ledge and RC - Reinforced Concrete Ledge. Please refer to the key plan for orientation. All floor plans are approximate measurements only and are subject to government re-survey. The balcony shall not be enclosed unless with the approved balcony screen. The cost of screen and installation shall be borne by the Purchaser.

Scan For Facade Catalogue

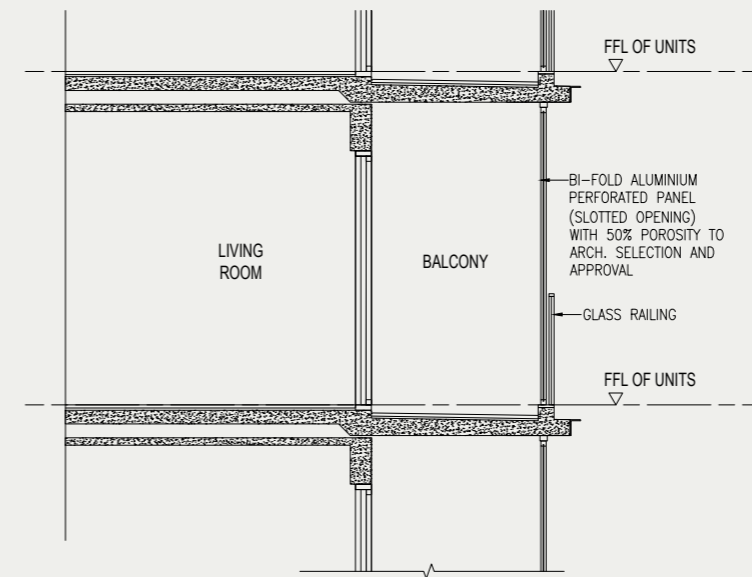


Applicable to:  
BLK 38  
#02-03

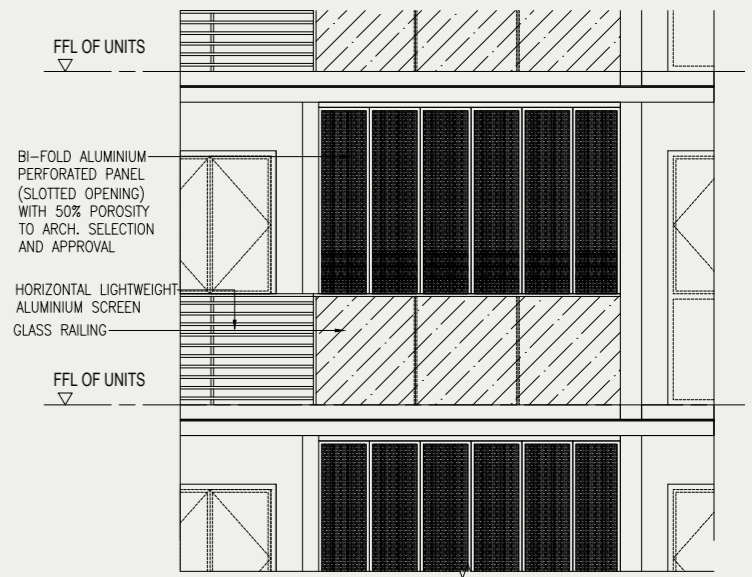
## Approved Typical Balcony Screen



Typical Balcony Screen Plan



Section



Elevation

Note:

The balcony shall not be enclosed unless with the approved balcony screen as shown above. The cost of screen and installation shall be borne by the Purchaser.

Where required to facilitate installation, the Architect reserves the right to determine appropriate details not limited to fixing details and colour tones.

